



# scorpio-ly Ltd.

Hardware and Software Development

## Key Maker Mitsubishi ASX (KOS 24C16)

### Keyless Go 2011-

#### System information

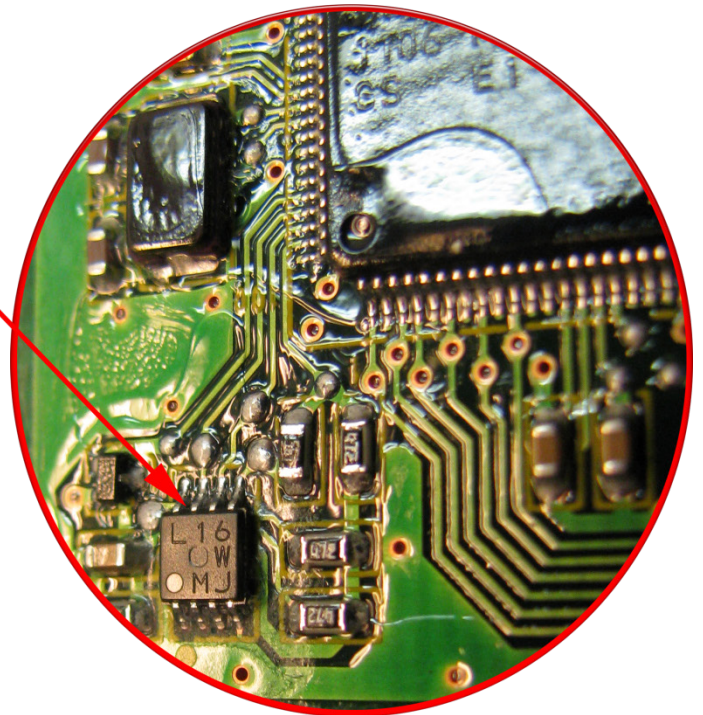
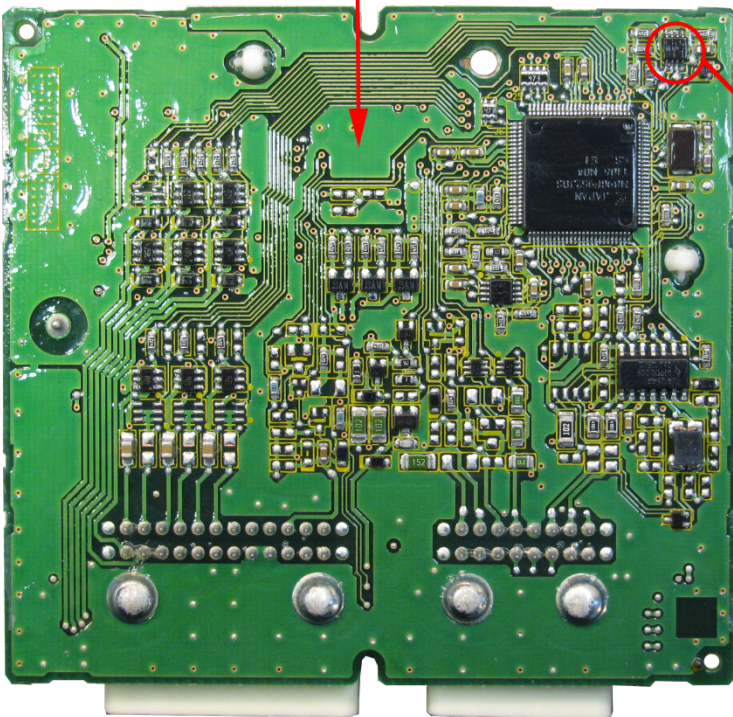
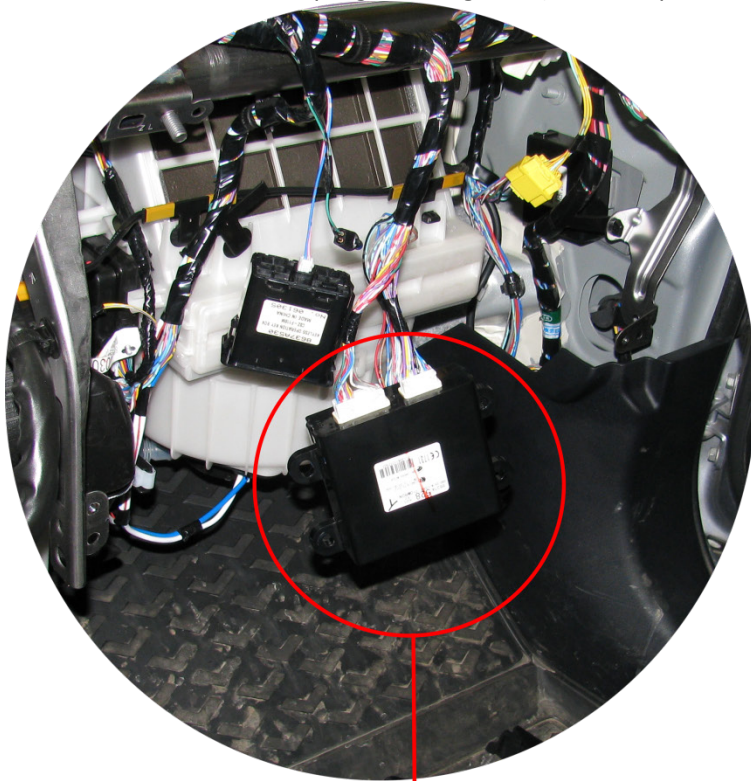
Original transponder: **PCF7952**

Allowed transponder: **PCF7952**

Data location: **24C16**

No. of keys: **4**

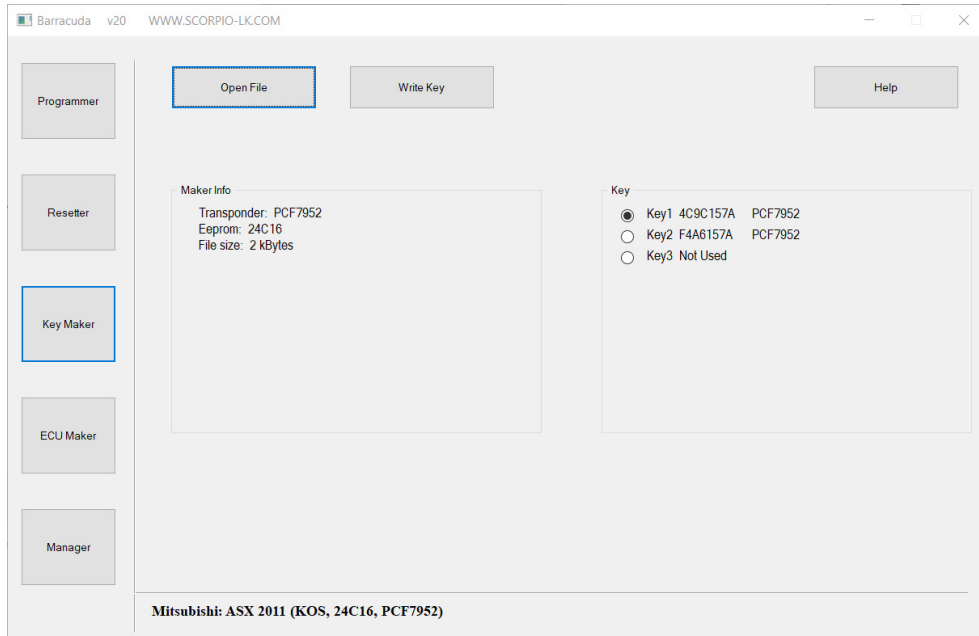
Remote programming: **Yes** (after the procedure the prepared key(s) are fully functional)



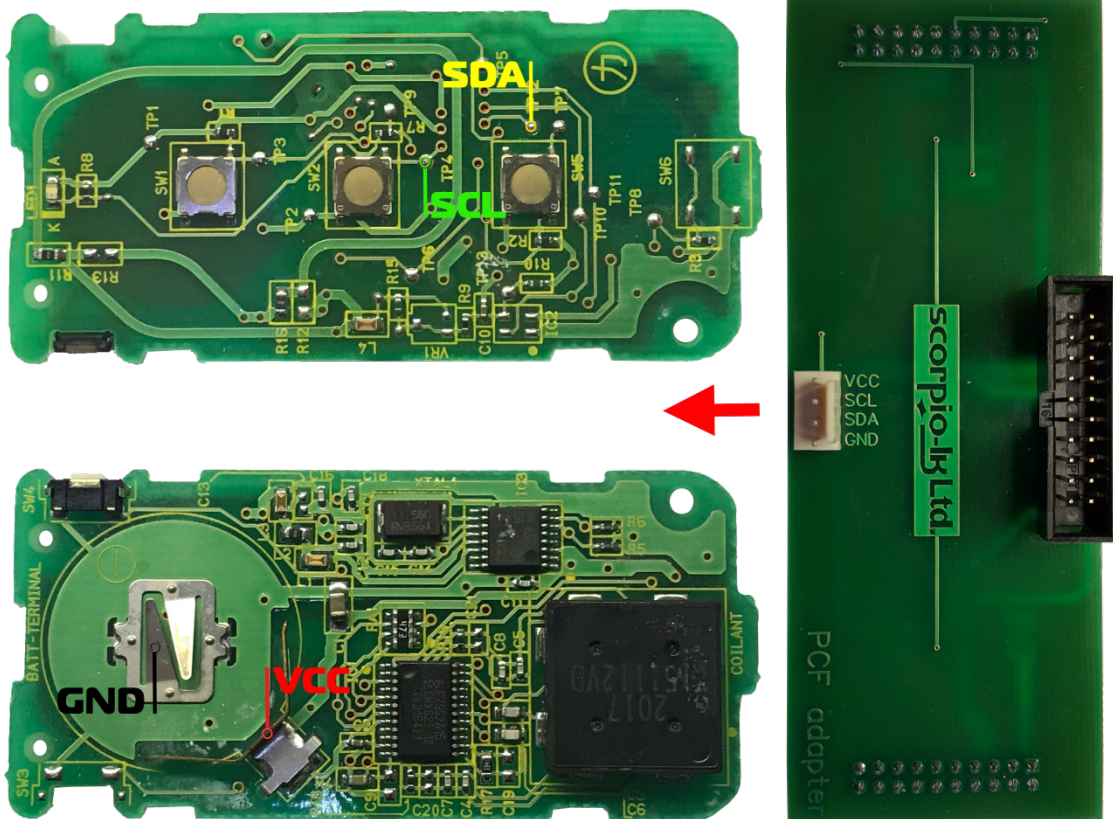


## Procedure

1. Read the target data location (**24C16 EEPROM**) with any general purpose programmer (**ex. Orange-5**) and save the dump file
2. In Barracuda select **Key Maker->Mitsubishi->ASX 2011 (KOS, 24C16, PCF7952)**
3. Open the dump file (**Open File**)



4. Attach **Adapter PCF** and connect to the key as shown on the diagram



5. Select **key position** and press **Write Key**, save the newly generated dump file
6. Write back the newly generated file in the **24C16 EEPROM**